



KRISTALLSPACES

All-Suite Resort Paznaun (Galtür / Ischgl)

46 luxury apartments coming in 2019/20

Restaurant & bar, On-site Wellness



Please zoom in for more detail. The parking is half underground / covered. We will build a bus stop right outside the building and the ski room is by the entrance. There are 4 buildings (A, B, C and the Spa) containing 46 apartments with 3 stair wells (Treppenhaus). All apartments have South facing aspects down over the road and across the Trisanna river towards the mountains e.g. Dreiköpfl. Google Map location: <https://goo.gl/maps/MgQYQ1HCe7s>

entwurf paznaun



M 1:200



Ebene 0,5 | Ebene 01

MgQYQ1HCe7s

Average price per square metre is EUR 6,200 ranging from EUR 5,000 to 7,500 / 8,000 for

Penthouses with best views. We are taking unbinding reservations already.

pr peter reiter
architekten
maria theresienstrasse 23 6020 innsbruck
t +43 512 565564 i www.peterreiter.at

02 Oktober 2018

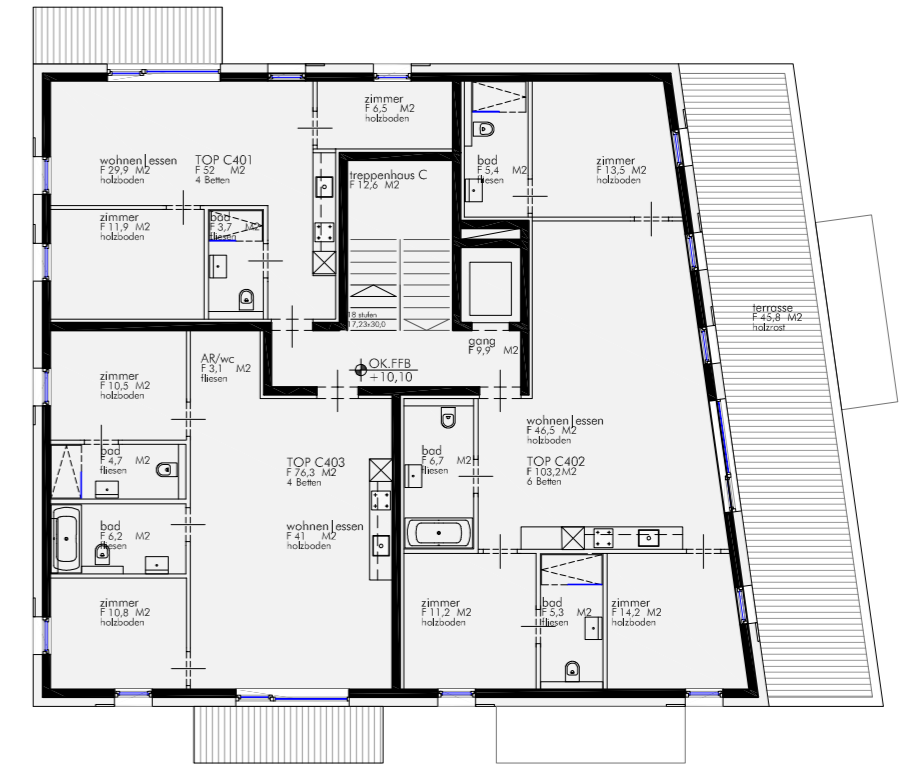
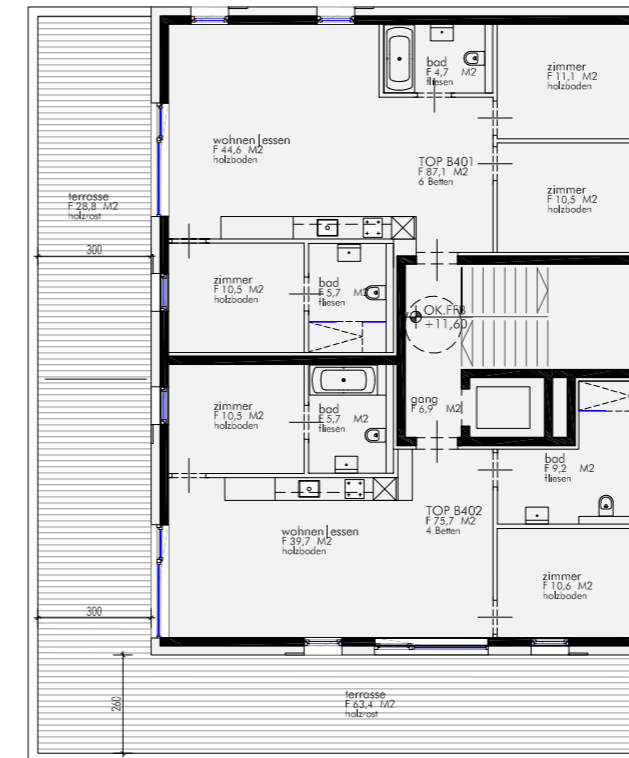
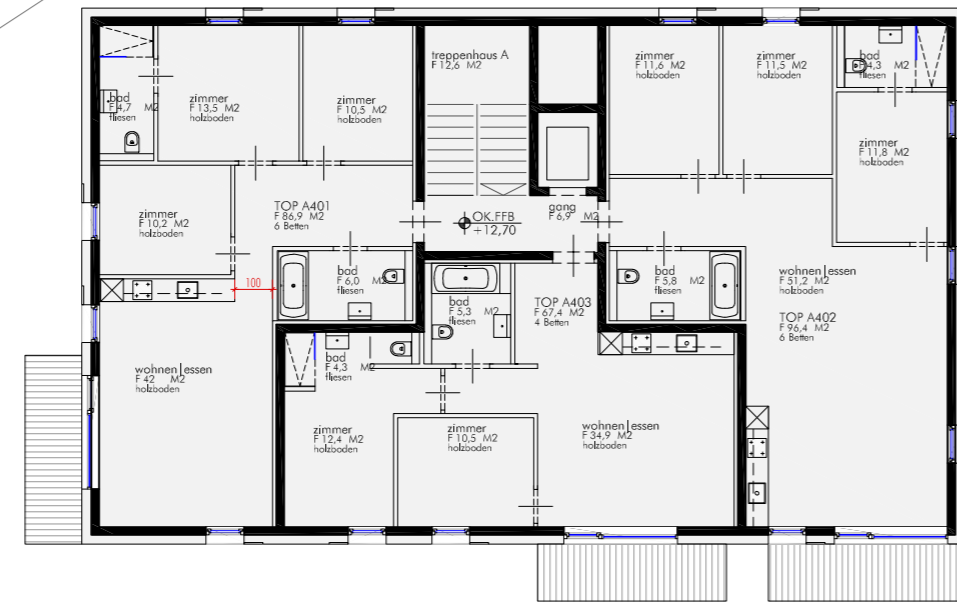


Almost all apartments have private South-facing balconies with spectacular mountain views to the West towards the Ballunspitze and Gorfenspitze (Galtür) and to the East towards the Bürkelkopf (3,032m) and Vesulspitze (3,089m).





M 1:200

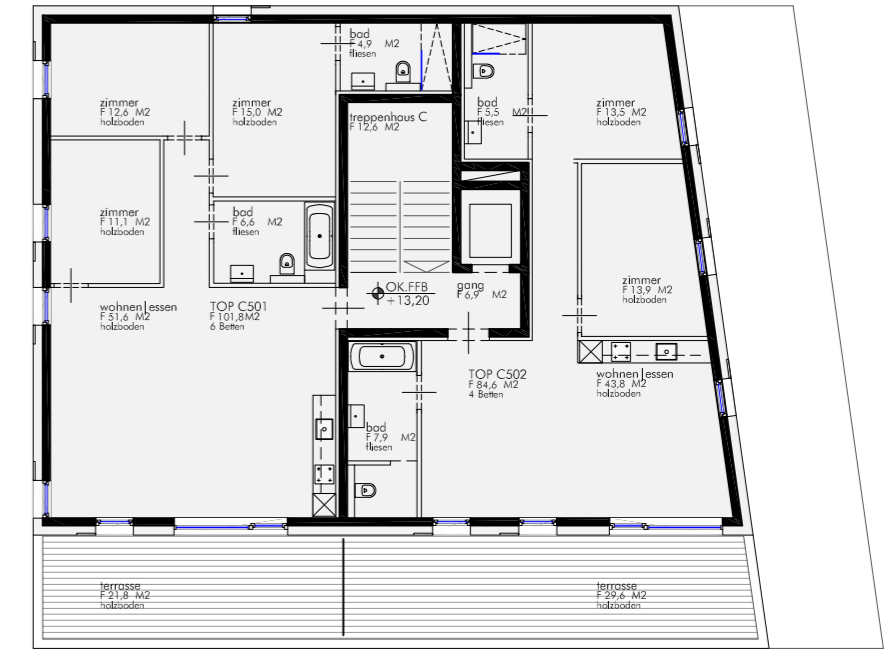


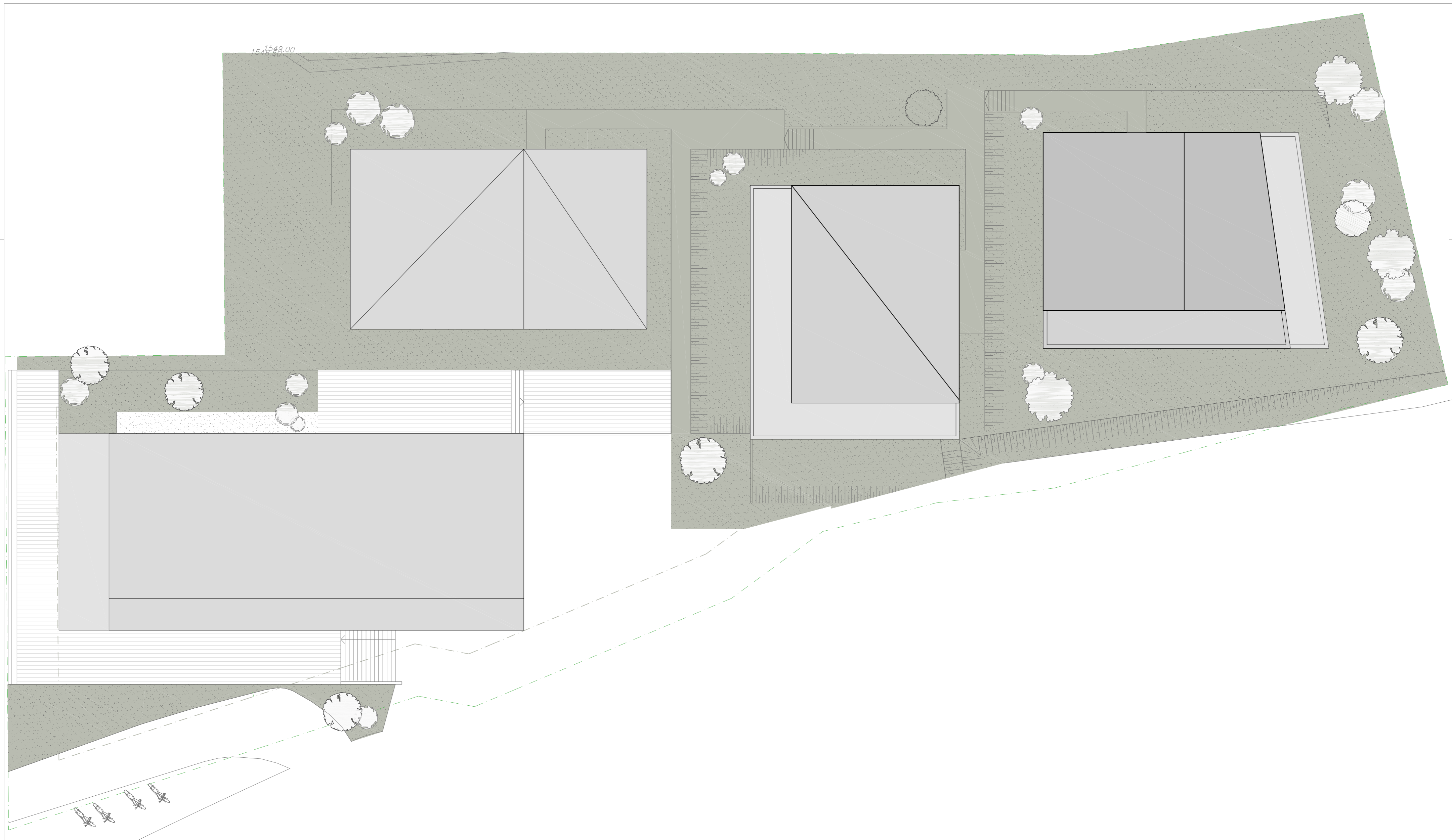


M 1:200



10m





entwurf paznaun

lageplan



M 1:200



pr peter reiter
architekten
maria theresien strasse 23 6020 innsbruck
t +43 512 565564 | www.peterreiter.at

02 Oktober 2018